

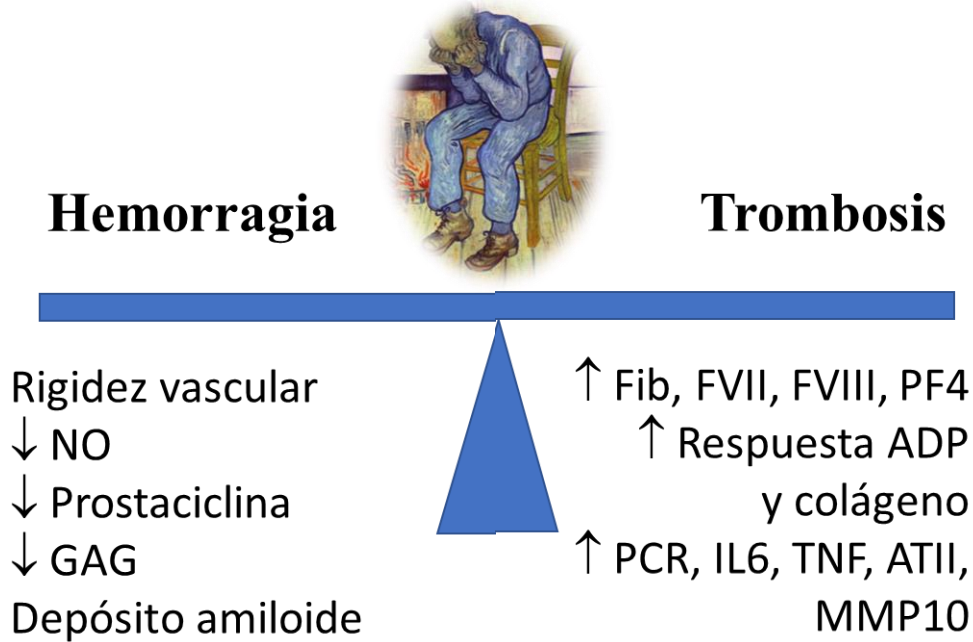
# **Revascularización en el Paciente Mayor**

**David Martí Sánchez**

**Sergio García Ortego**

**Madrid**

# Particularidades Tisulares y Anatómicas

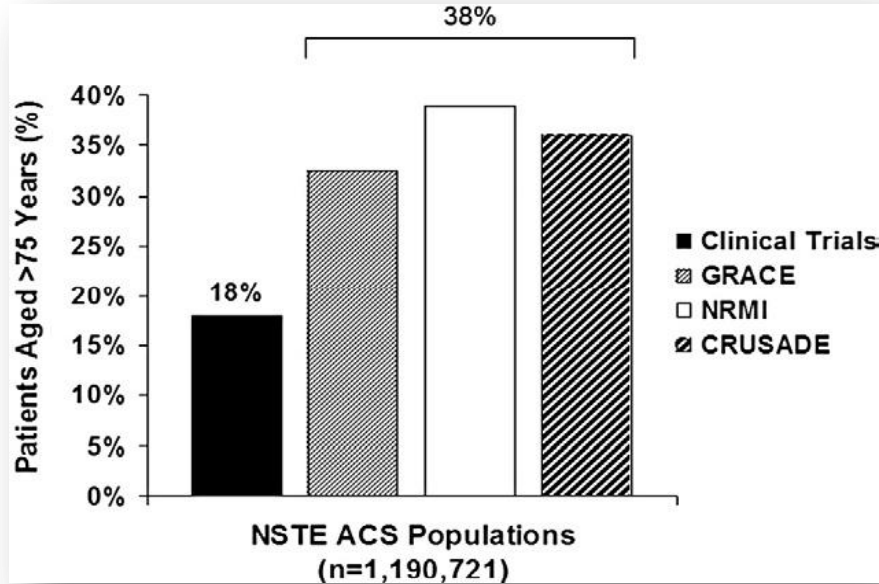


Franchini M. Crit Rev Oncol Hematol 2006.

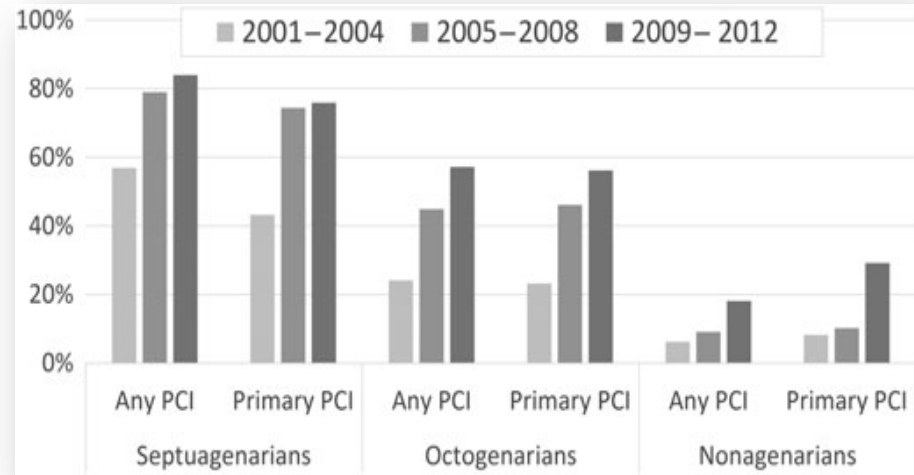
N = 1009	
<b>Calcio</b>	54%
<b>Bifurcación</b>	21%
<b>Tortuosidad</b>	24%
<b>Ostial</b>	14%
<b>CTO</b>	8%
<b>Trombo</b>	10%

Rajani R, et al. Br J Cardiol. 2011:73

# De Donde Venimos



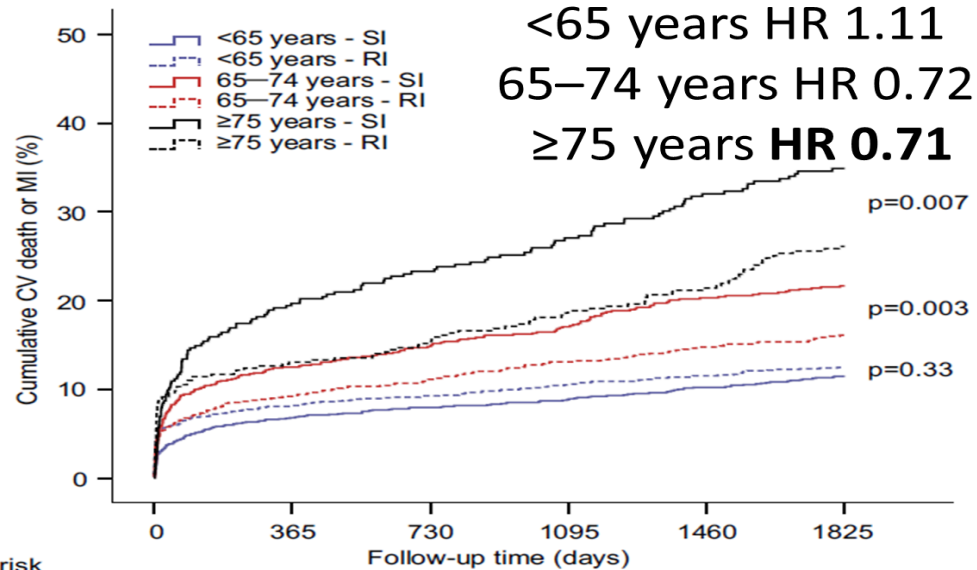
Dauerman et al. Am Heart J 2010



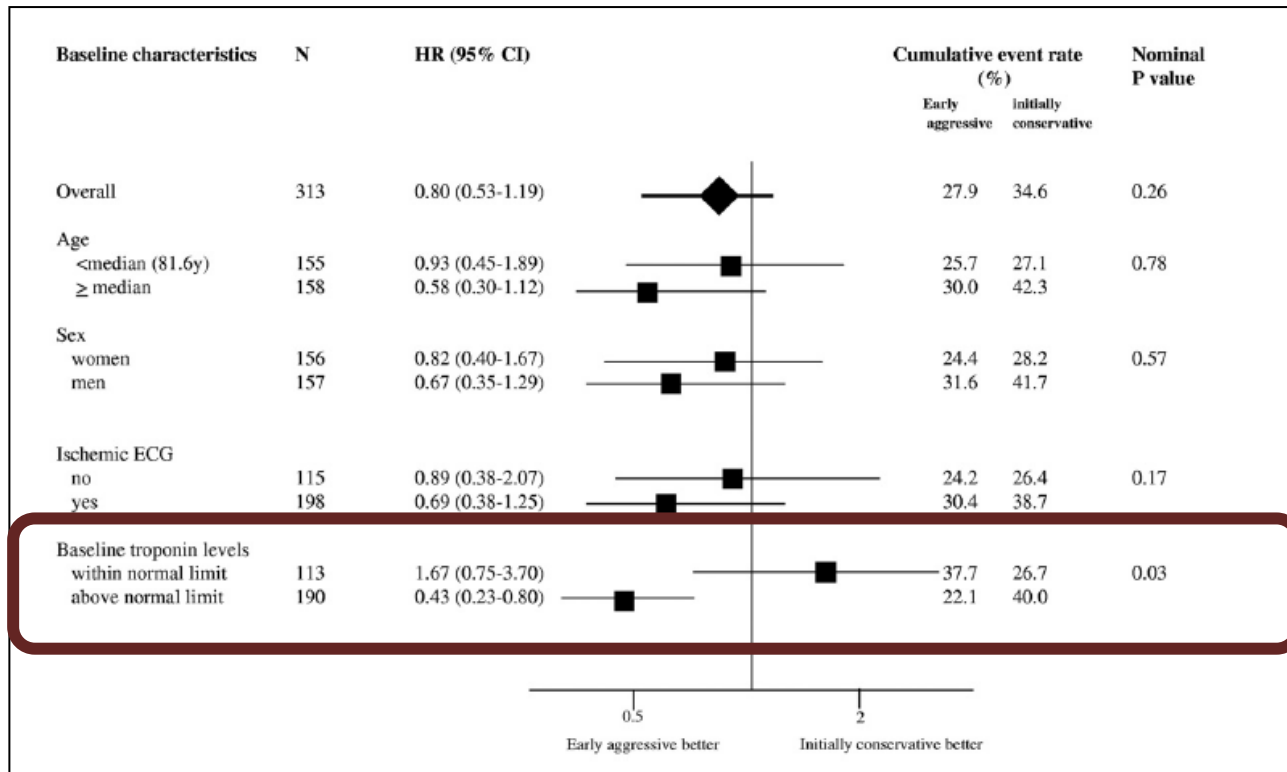
Schoenenberger AW et al. Eur Heart J 2010

# Estudios «FIR»: Punto de Inflexión en Abordaje INV

## FRISC II - ICTUS - RITA-3



# Italian Elderly ACS Study: Resultados según Troponina



**N=313**

**82 yo**

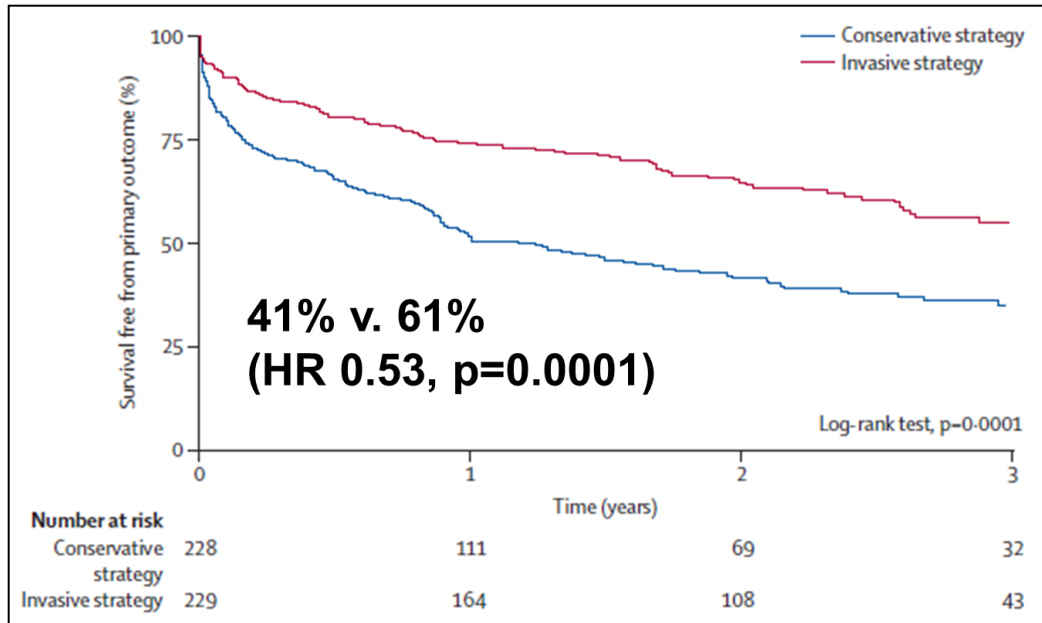
**Coro: 88% v. 29%**

**Revasc: 55% vs 23%**

**Radial >70%**

**Sangrado  
sorprendentemente bajo  
y NS (crit selección)**

# AFTER EIGHTY: Impacto Neto de Estrategia Invasiva

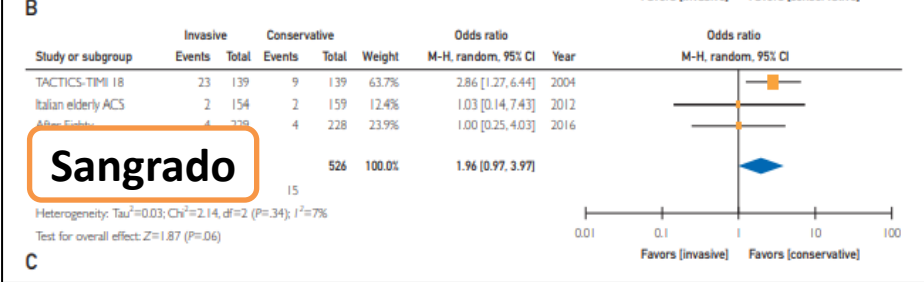
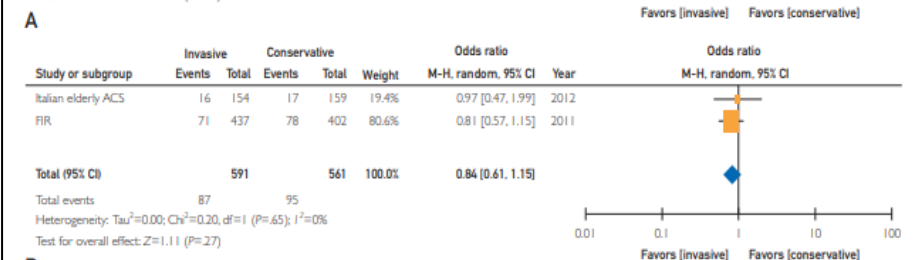
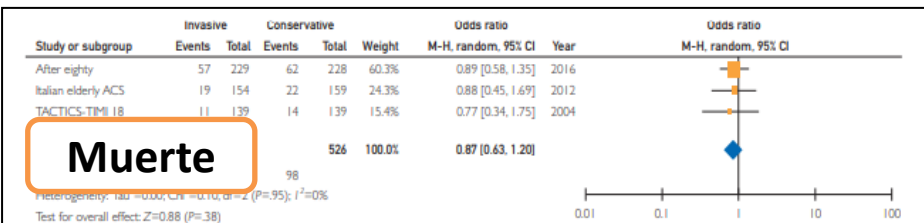
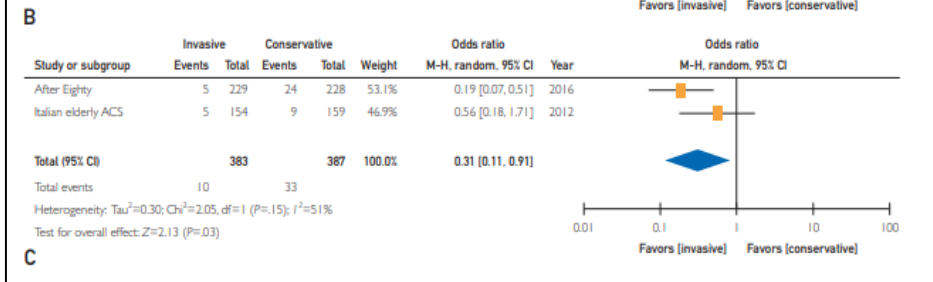
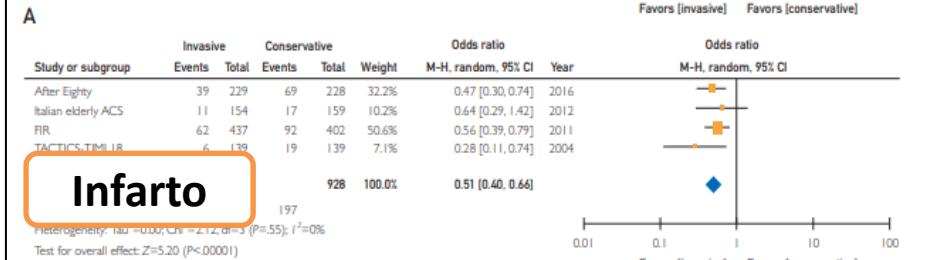
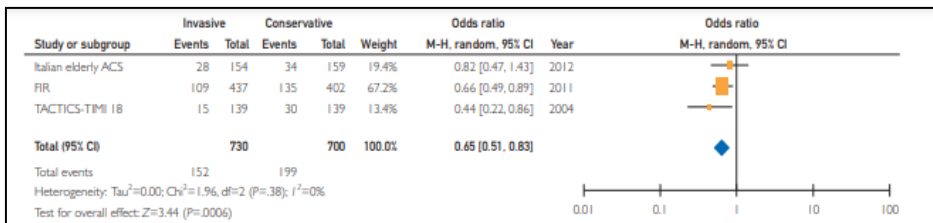


**>90% troponinas (+)**  
**NO Crossover**

Components of the primary endpoint				
Myocardial infarction	39 (17%)	69 (30%)	0.50 (0.33-0.75)	0.0003
Follow-up patient years	51076	44437		

Complications (bleeding)			
<b>Major</b>		4 (2%)	4 (2%)
Gastrointestinal	2 (1%)	2 (1%)	
Pericardial tamponade	1 (<1%)	0	
Traumatic epidural haematoma	1 (<1%)	0	
Traumatic subdural haematoma	0	1 (<1%)	
Subarachnoid haemorrhage	0	1 (<1%)	
<b>Minor</b>		23 (10%)	16 (7%)
Gastrointestinal	14 (6%)	11 (5%)	
Other	9 (4%)	5 (2%)	

# Metaanálisis: INV v. CON en mayores con SCASEST



## Recomendaciones para personas mayores con SCASEST

2020

Recommendations	Class <sup>a</sup>	Level <sup>b</sup>
It is recommended to apply the same diagnostic strategies in older patients as for younger patients. <sup>458</sup>	I	B
It is recommended to apply the same interventional strategies in older patients as for younger patients. <sup>463,467</sup>	I	B
The choice of antithrombotic agent and dosage, as well as secondary preventions, should be adapted to renal function, as well as specific contraindications. <sup>461</sup>	I	B



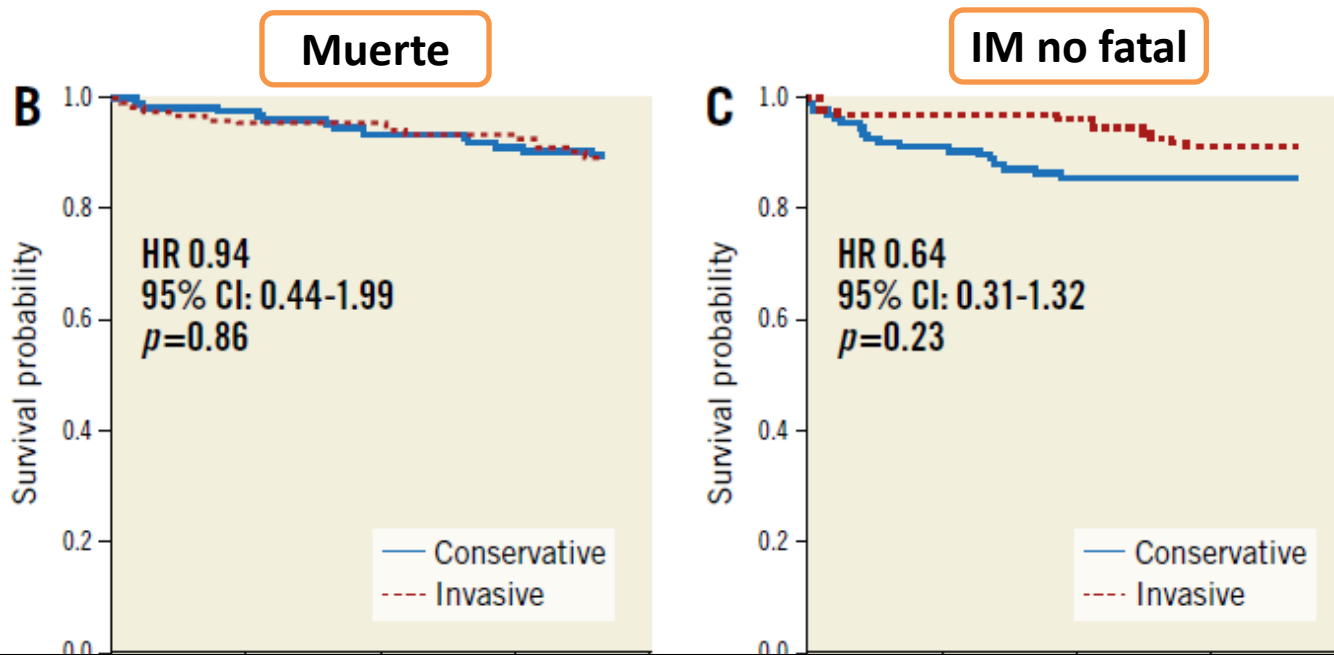
EUROPEAN  
SOCIETY OF  
CARDIOLOGY

2020 ESC Guidelines for the management of acute coronary syndromes in patients presenting without persistent ST-segment elevation. Eur Heart J.

2021;42(14):1289-1367



# RINCAL: INV vs CON en muy mayores con NSTEMI

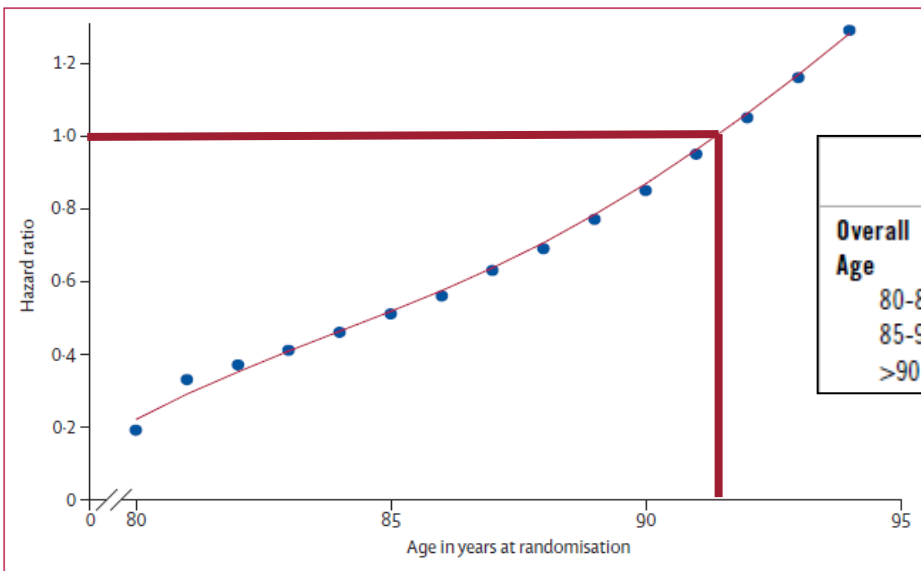


El ensayo finalizó prematuramente debido a un reclutamiento lento  
(n=251 sobre 750 proyectados, 12 centros UK, may/14-sep-18)

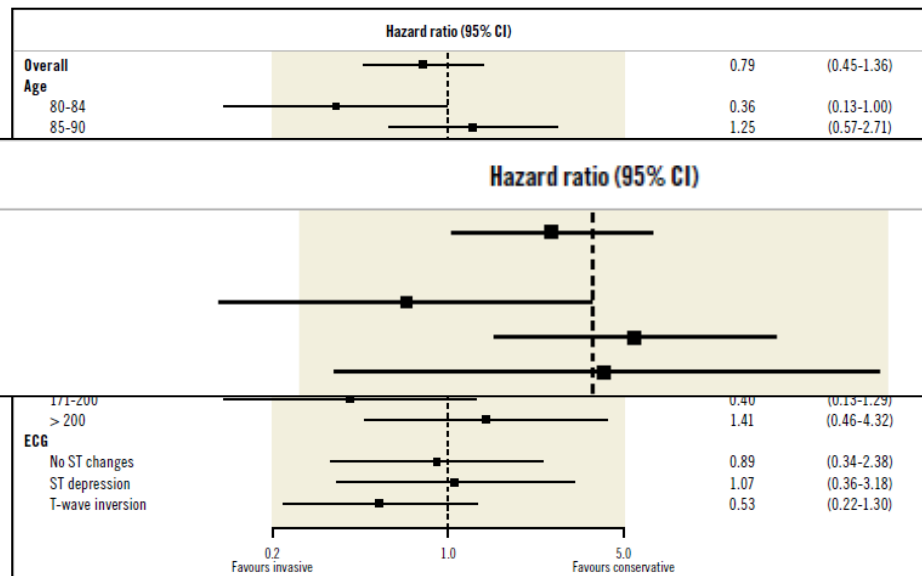
## AFTER EIGHTY y RINCAL en perspectiva

AFTER EIGHTY	RINCAL
N=457 93% tropo (+) Edad 84,7 (80–93)	N=251 100% tropo (+) Edad 84,8 (80- 95)
Crossover 0% 90% radial Time-to-angio 3d Ticagrelor minoritario (5%)	Crossover 11/126 83% radial Time-to-angio 2d Clopi/Tica NR
IM/RV urgente/ictus/muerte @18mo Sangrado TIMI Infarto miocardio 17% v. 30% Muerte 25% v. 27%	IM/muerte @12mo Sangrado BARC Infarto miocardio 9,7% v. 14,3% Muerte 10,5% v. 11,1%

# AFTER EIGHTY y RINCAL en perspectiva



Tegn et al. Lancet. 2016



de Belder A, et al. EuroIntervention. 2021

# Estudios en Curso

## Routinely Deferred Versus Early Intervention in Elderly Patients With Non-ST-elevation Myocardial Infarction (DEAR-OLD)



The safety and scientific validity of this study is the responsibility of the study sponsor and investigators. Listing a study does not mean it has been evaluated by the U.S. Federal Government. Read our [disclaimer](#) for details.

**N=696, Early (<24 hrs) v. Deferred (>72 hrs)**

ClinicalTrials.gov Identifier: NCT02900001

[Recruitment Status](#) ⓘ : Unknown

[Verified September 2017](#) by Yuejin Yang, Chinese Academy of Medical Sciences, Fuwai Hospital.

Recruitment status was: Recruiting

[First Posted](#) ⓘ : September 14, 2016

[Last Update Posted](#) ⓘ : October 3, 2017

## The British Heart Foundation SENIOR-RITA Trial (SENIOR-RITA)



The safety and scientific validity of this study is the responsibility of the study sponsor and investigators. Listing a study does not mean it has been evaluated by the U.S. Federal Government. [Know the risks and potential benefits](#) of clinical studies and talk to your health care provider before participating. Read our [disclaimer](#) for details.

**N=2300, ≥75 yo, INV v. CON**

ClinicalTrials.gov Identifier: NCT03052036

[Recruitment Status](#) ⓘ : Recruiting

[First Posted](#) ⓘ : February 14, 2017

[Last Update Posted](#) ⓘ : September 25, 2020

See [Contacts and Locations](#)